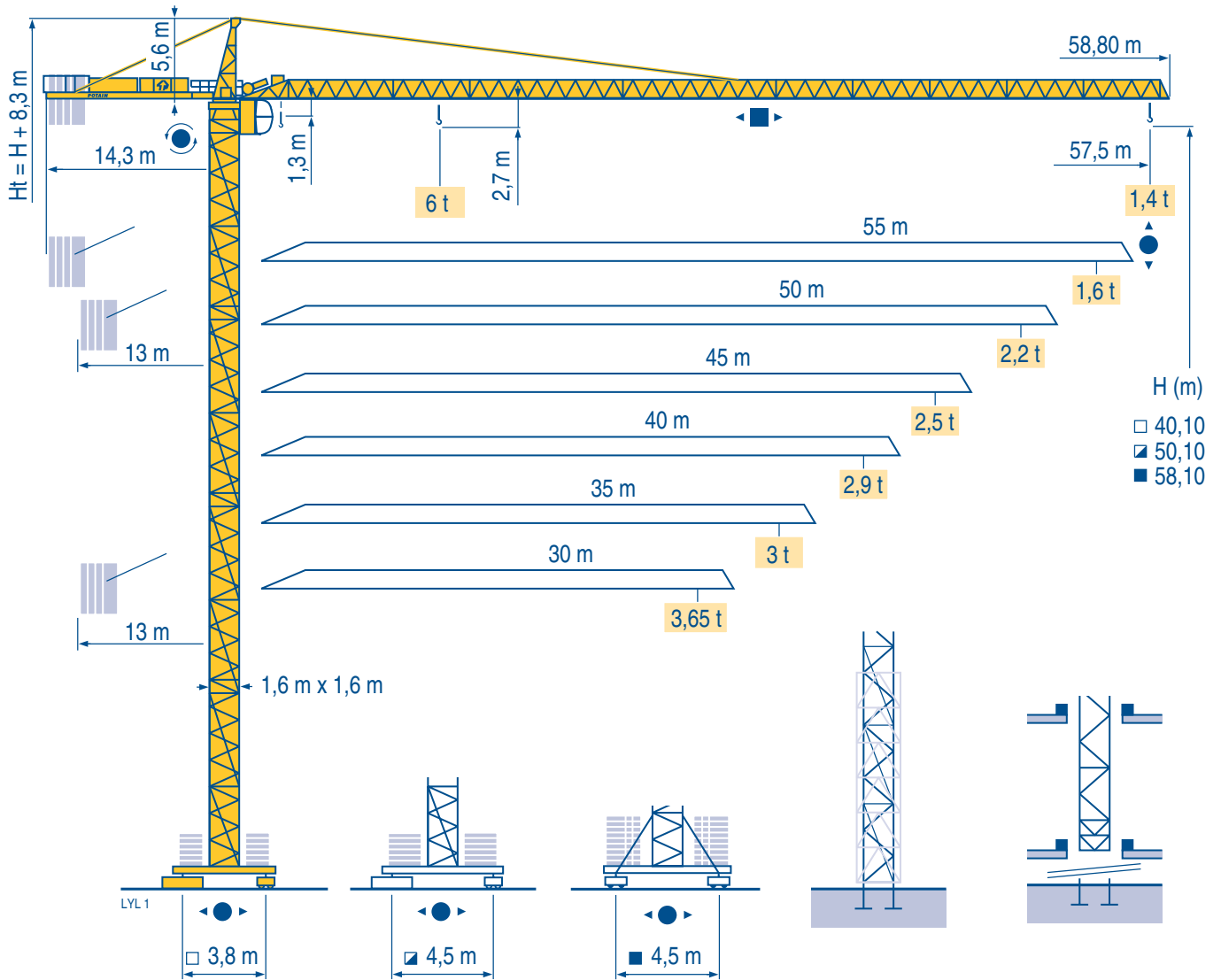


MD 125 B

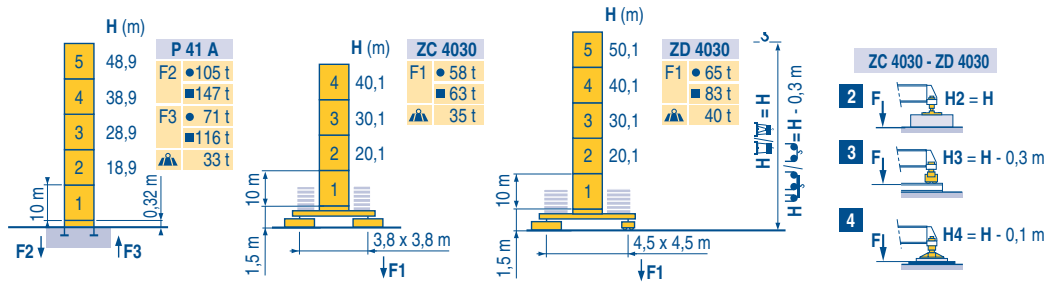


CITY CRANE

CE FEM 1.001-A3

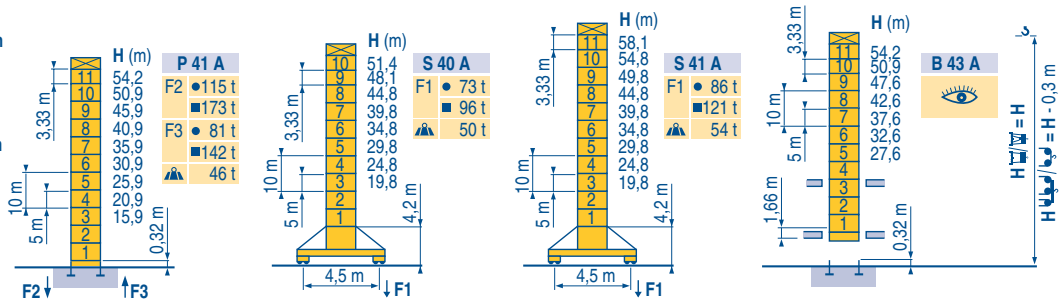
Mat / Réactions City 1,6 m

Maste /
Eckdrücke
Masts /
Reactions
Mástil /
Reacciones
Torre / Reazioni
Tramo /
Reacções



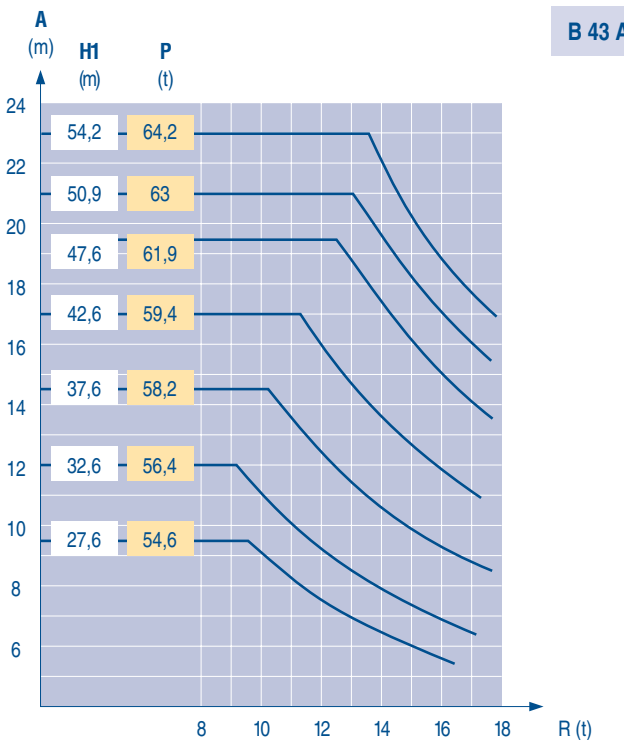
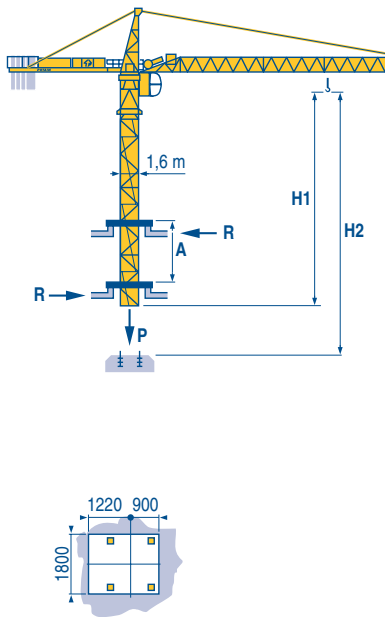
LVL1

Télescopable 1,6 m
Teleskopierbar 1,6 m
Telescopico 1,6 m
Telescopico 1,6 m
Telescopagem 1,6 m



Télescopage sur dalles
Kletterkrane im Gebäude
Climbing crane
Telescopage gruas trepadoras
Gru in cavedio
Telescopagem sobre lajes

LVL1



CITY CRANE
MD 125 B

POTAIN

F	D	GB	E	I	P
●	●	●	●	●	●
■	■	■	■	■	■
▲	▲	▲	▲	▲	▲
Réactions en service	Reaktionskräfte in Betrieb	Reactions in service	Reacciones en servicio	Reazioni in servizio	Reacções em serviço
Réactions hors service	Reaktionskräfte außer Betrieb	Reactions out of service	Reacciones fuera de servicio	Reazioni fuori servizio	Reacções fora de serviço
A vide sans lest (ni train de transport) avec flèche et hauteur maximum.	Ohne Last, Ballast (und Transportachse), mit Maximalausleger und Maximalhöhe.	Without load, ballast (or transport axes), with maximum jib and maximum height.	Sin carga, sin lastre, (ni tren de transporte), flecha y altura máxima.	A vuoto, senza zavorra (ne assali di trasporto) con braccio massimo e altezza massima.	Sem carga (nem trem de transporte)- sem lastro com lança e altura máximas.

Courbes de charges

Lastkurven

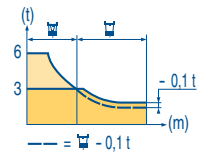
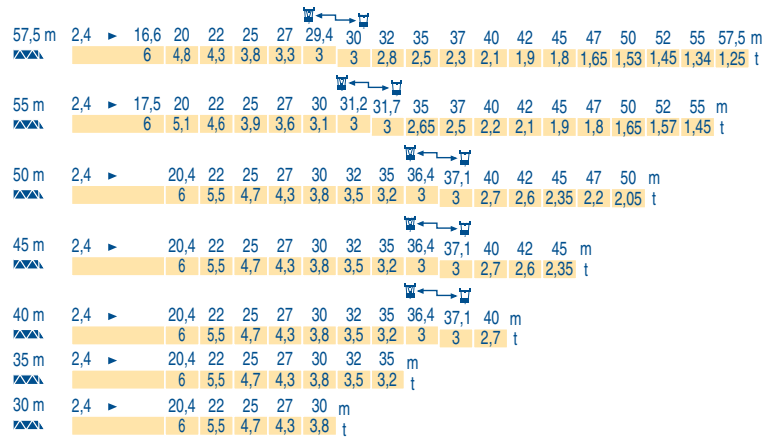
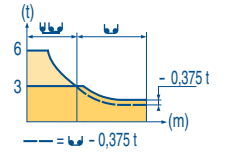
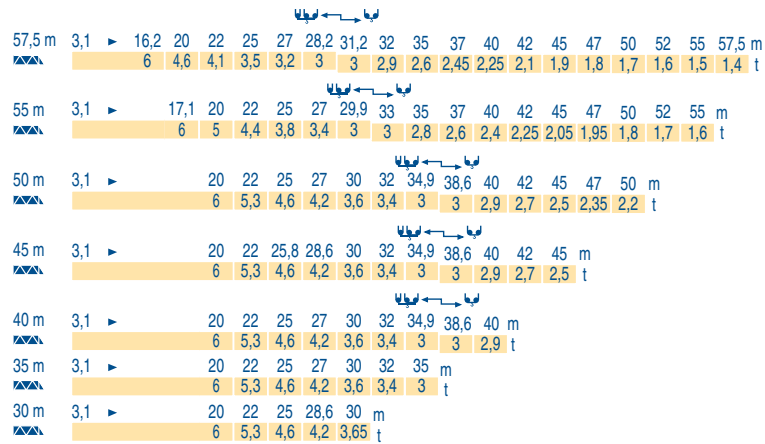
Load diagrams

Curvas de cargas

Curve di carico

Curva de cargas

LVL 1



Lest de contre-flèche

Gegenauslegerballast

Counter-jib ballast

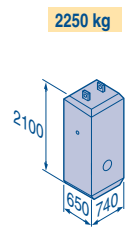
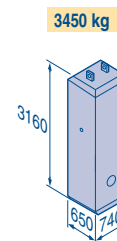
Lastre de contra flecha

Contrappeso

Lastros da contra lança

LVL 1

		3450 kg	2250 kg	▲ (kg)
57,5 m	14,3 m	5	-	17 250
55 m	14,3 m	4	1	16 050
50 m	13 m	4	1	16 050
45 m	13 m	3	2	14 850
40 m	13 m	4	-	13 800
35 m	13 m	3	1	12 600
30 m	13 m	2	2	11 400



Lest de base

Grundballast

Base ballast

Lastre de base

Zavorra di base

Lastros da base

LVL 1

□1,6 m	ZC 4030 - ● -	H (m)	40,1	30,1	20,1						
		▲ (t)	70	65	60						
□1,6 m	ZD 4030 - ● -	H (m)	50,1	40,1	30,1	20,1					
		▲ (t)	70	55	45	45					
□1,6 m	S 40 A - ● -	H (m)	51,4	48,1	44,8	39,8	34,8	29,8	24,8	19,8	
		▲ (t)	84	72	54	48	42	42	42	36	
□1,6 m	S 41 A - ● -	H (m)	58,1	54,8	49,8	44,8	39,8	34,8	29,8	24,8	19,8
		▲ (t)	114	102	78	54	48	42	42	42	36

CITY CRANE





MD 125 B



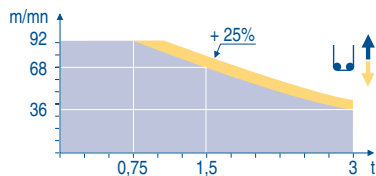
	F	D	GB	E	I	P
A	Distance entre cadres	Abstand zwischen den Rahmen	Distance between collars	Distancia entra marcos	Distanza fra i telai	Distância entre quadros
H1	Hauteur grue	Kranhöhe	Crane height	Altura grúa	Altezza gru	Altura da grua
P	Poids de la grue(en service)	Krangewicht (in Betrieb)	Crane weight (in service)	Peso de la grúa (en servicio)	Peso della gru (in servizio)	Peso da grua (em serviço)
R	Réaction horizontale	Horizontalkräfte	Horizontal reaction	Reaccion horizontal	Reazione orizzontale	Reacção horizontal
	Voit télescopage sur dalles	Siehe Kletterkrane im Gebäude	See climbing crane	Veja grua trepadora	Consultare gru in cavedio	Ver telescopagem sobre lages






Mécanismes
Antriebe
Mechanisms
Meccanismi
Mecanismos


LYL 1

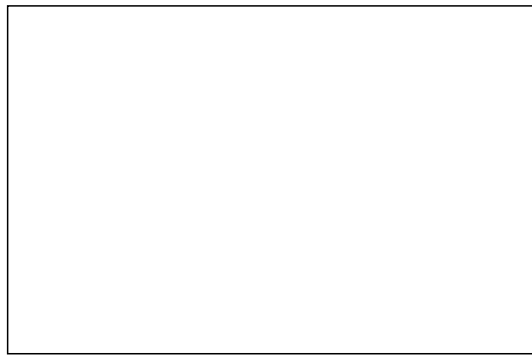
		↑						↑↑						ch - PS hp	kW		
▲	33 LVF 15 Optima	m/min	3 → 12 → 36 → 48 → 68 → 92						1,5 → 6 → 18 → 24 → 34 → 46						30	22	260 m
		t	3	3	3	2,25	1,5	0,75	6	6	6	4,5	3	1,5			
◀ ▶	4 D3 V3	m/min	15 - 30 - 58												4	3	
	RCV 145	tr/min U/min rpm	0 → 0,8												2 x 6	2 x 4,4	
ZC 4030 ZD 4030	RT 224	m/min	25												2 x 4	2 x 2,9	
◀ ● ▶	S 40 A R ≥ 10 m	m/min	12,5 - 25												2 x 7	2 x 5,2	
◀ ● ▶	S 41 A A1 2V R ≥ 10 m	m/min	15 - 30												4 x 5	4 x 3,7	
CEI 38		IEC 38	kVA														
400 V (+6% -10%) 50 Hz			33 LVF : 50 kVA						2000/14								

33 LVF 15
Optima



	F	D	GB	E	I	P
	Levage	Heben	Hoisting	Elevación	Sollevamento	Elevação
	Distribution	Katzfahren	Trolleying	Distribución	Distribuzione	Distribuição
	Orientation	Schwenken	Slewing	Orientación	Rotazione	Rotação
	Translation	Kranfahren	Travelling	Traslación	Traslazione	Translação
	Conforme aux directives CEE sur le niveau acoustique	Gemäss EWG-Richtlinien für den Schall-Leistungspegel	In compliance with the EEC Instructions on noise level	Conforme con las directivas CEE sobre el nivel acústico	Conforme alle direttive CEE sul livello acustico	Conforme as directivas CEE sobre o nível acústico

	Document commercial non contractuel. Pour toute information technique se référer à la notice correspondante	Unverbindliches Vertriebsdokument. Für technische Informationen, siehe die entsprechenden Anweisungen.	This commercial document is not legally binding. For any technical information, please refer to the corresponding instructions.	Documento commercial no contractual. Para cualquier información técnica, ver la noticia correspondiente.	Documento commerciale non vincolante, per tutte le informazioni tecniche fare riferimento al catalogo istruzioni	Documento comercial não contractual. Para qualquer informação técnica complementar consultar as respectivas instruções
--	---	--	---	--	--	--



Americas
Tel : +1 920 683 6322
Tel : +1 717 597 8121

Europe - Middle East - Africa
Tel : +(33) 4 72 81 50 00
Tel : +(44) 191 565 6281

Asia - Pacific
Tel : +(65) 6861 7133
Fax : +(65) 6862 4142

www.manitowoccrane.com

**18, rue de Charbonnières - B.P.173
69132 ECULLY Cedex - France**

Tél. : (33) 4 72 18 20 20
Fax. : (33) 4 72 18 20 00
www.manitowoccrane.com www.potain.com

CITY CRANE MD 125 B
Réf. 2003 48 LYL 1

Copyright.Reproduction interdite © POTAIN 2003

Réalisation HeadLines