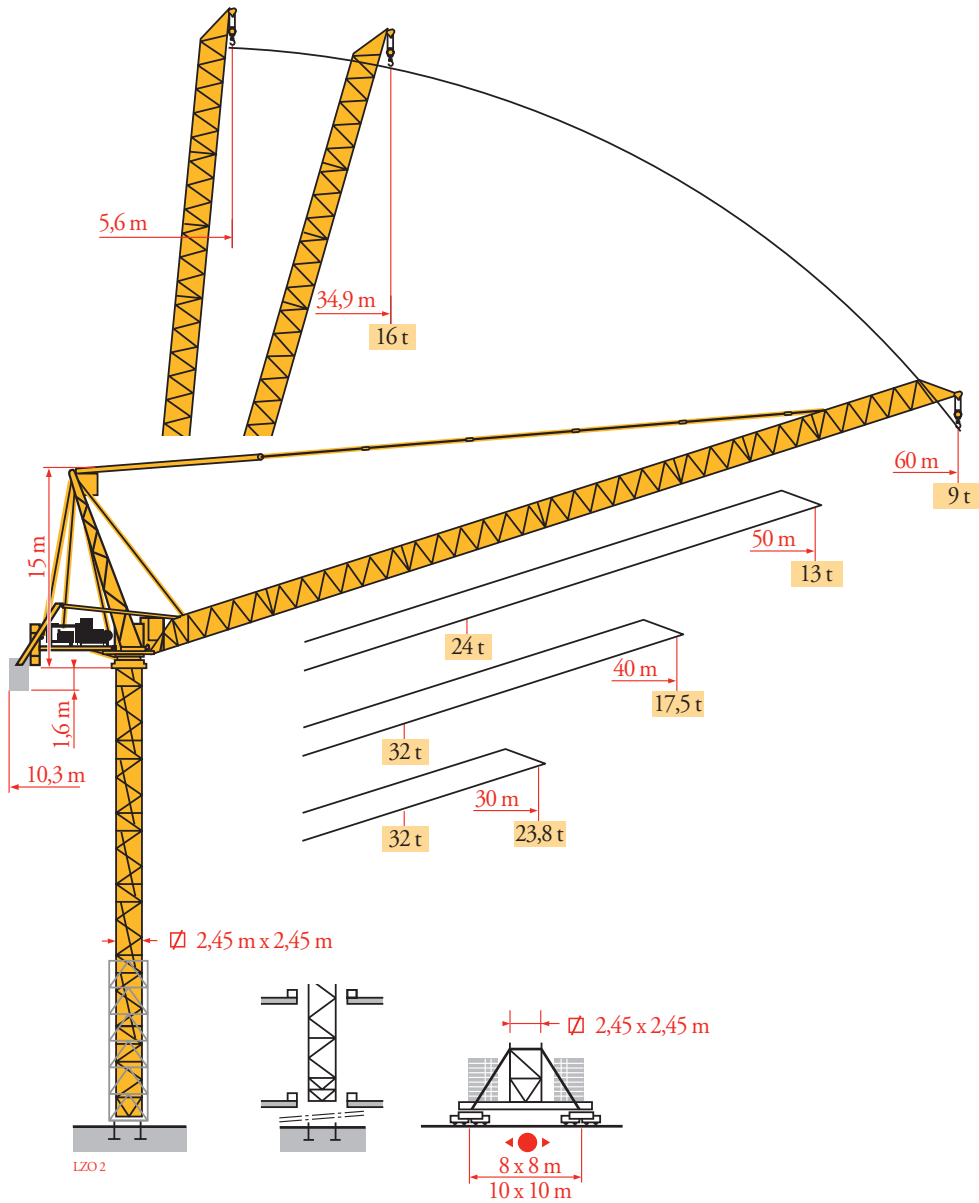


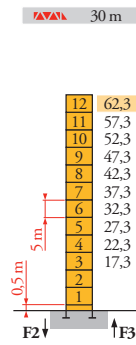
# Potain MR 605B H32



Mat / Réactions  
 Maste / Eckdrücke  
 Masts / Reactions  
 Mástil / Reacciones  
 Torre / Reazioni  
 Tramo / Reações  
 Композиции башни /  
 Реакции

1204

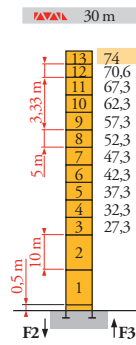
2,45 m  
 30 m ⇒ 60 m



30 m	5 m	3,33 m	
H (m)	59	10	2
40 - 50 m	60,6	11	1
60 m			

**P 800 A**

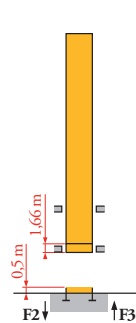
F2	289 t
F3	199 t
	122 t



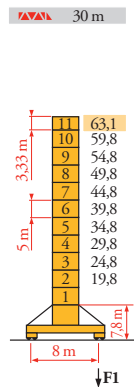
30 m	10 m	5 m	3,33 m	
H (m)	72,3	2	10	-
40 - 50 - 60 m				

**P 850 A**

F2	324 t
F3	228 t
	134 t



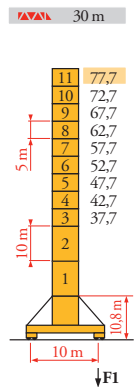
**B 800 B**



30 m	5 m	3,33 m	
H (m)	58,1	9	1
40 - 50 m	61,4	9	2
60 m			

**Y 800 A**

F1	195 t
	182 t
	158 t



30 m	10 m	5 m	3,33 m	
H (m)	74,4	2	7	2
40 - 50 m	76,1	2	8	1
60 m				

**J 850 A**

F1	178 t
	226 t
	185 t

**FR**

- Réactions en service
- Réactions hors service
- A vide sans lest (ni train de transport) avec flèche et hauteur maximum
- Nous consulter

**DE**

- Reaktionskräfte in Betrieb
- Reaktionskräfte außer Betrieb
- Ohne Last, Ballast (und Transportachse), mit Maximalausleger und Maximalhöhe
- Auf Anfrage

**EN**

- Reactions in service
- Reactions out of service
- Without load, ballast (or transport axles), with maximum jib and maximum height
- Consult us

**ES**

- Reacciones en servicio
- Reacciones fuera de servicio
- Sin carga, sin lastre, (ni tren de transporte), flecha y altura máxima
- Consultarnos

**IT**

- Reazioni in servizio
- Reazioni fuori servizio
- A vuoto, senza zavorra (ne assali di trasporto) con braccio massimo e altezza massima
- Consultateci

**PT**

- Reações em serviço
- Reações fora de serviço
- Sem carga (nem trem de transporte)- sem lastro com lança e altura máximas
- Consultar-nos

**RU**

- Реакции при работе
- Реакции в покое
- Вес без груза, балласта (или транспортных осей), с максимальной длиной стрелы и максимальной высотой
- Проконсультируйтесь у нас



Mécanismes  
Antriebe  
Mechanisms  
Mecanismos  
Meccanismi  
Mecanismos  
Механизмы

LZO 4

MR 605 B H32 50 Hz										ch-PS	kW		
▲	180 LBR 80	m/min	3,8/38	6/60	9,5/95	15,2/152	1,9/19	3/30	4,75/47,5	7,6/76	180	132	1090 m
	L 1090	t	16	10,1	5,9	3,25	32	20,2	11,8	6,5			
▶	90 VBR		3 min 17 s								90	66	
○	R-132	tr/min U/min rpm	0 0,67								3 x 6	3 x 4,4	
▶	Y 800 A J 850 A	m/min											
CEI 38		IEC 38		kVA									
400 V (+6% -10%) 50 Hz		270 kVA											

MR 605 B H32 60 Hz										ch-PS	kW		
▲	215 LBR 80	m/min	4,6/46	7,2/72	11,4/114	18,2/182	2,3/23	3,6/36	5,7/57	9,1/91	215	158	1090 m
	L 1090	t	16	10,1	5,9	3,25	32	20,2	11,8	6,5			
▶	108 VBR		2 min 44 s								108	79	
○	R-158	tr/min U/min rpm	0 0,8								3 x 7,2	3 x 5,3	
▶	Y 800 A J 850 A	m/min											
CEI 38		IEC 38		kVA									
480 V (+6% -10%) 60 Hz		325 kVA											

▲	<b>FR</b>	<b>DE</b>	<b>EN</b>	<b>ES</b>	<b>IT</b>	<b>PT</b>	<b>RU</b>
▶	Levage	Heben	Hoisting	Elevación	Sollevamento	Elevação	Подъем
○	Distribution	Katzfahren	Trolleying	Distribución	Distribuzione	Distribuição	Перемещение каретки
○	Orientation	Schwenken	Slewing	Orientación	Rotazione	Rotação	Поворот
○	Translation	Kranfahren	Travelling	Traslación	Traslazione	Translação	Перемещение крана



Document commercial non contractuel. Pour toute information technique se référer à la notice correspondante.

Unverbindliches Vertriebsdokument. Für technische Informationen, siehe die entsprechenden Anweisungen.

This commercial document is not legally binding. For any technical information, please refer to the corresponding instructions.

Documento comercial no contractual. Para cualquier información técnica, ver la noticia correspondiente.

Documento commerciale non vincolante, per tutte le informazioni tecniche fare riferimento al catalogo istruzioni.

Documento comercial não contractual. Para qualquer informação técnica complementar consultar as respectivas instruções.

Этот коммерческий документ не является юридически обязательным. Для получения технической информации, см. соответствующие инструкции.



**Manitowoc - Americas - World Headquarters**  
2400 S. 44th Street • Manitowoc • WI 54220 USA  
Tel: +1 920 684 4410 • Fax: +1 920 652 9778

**Manitowoc - Europe, Middle East & Africa**  
Manitowoc France SAS  
18, rue de Charbonnières B.P. 173 • 69132 ECULLY Cedex • FRANCE  
Tel: +33 (0)4 72 18 20 20 • Fax: +33 (0)4 72 18 20 00

**Manitowoc - Asia Pacific**  
16F Xu Hui Yuan Building,  
1089 Zhongshan No.2 Road (S) • Shanghai 200030 China  
Tel: +86 21 6457 0066 • Fax: +86 21 6457 4955

MR 605B H32

REF. 2003 48 LZO 6