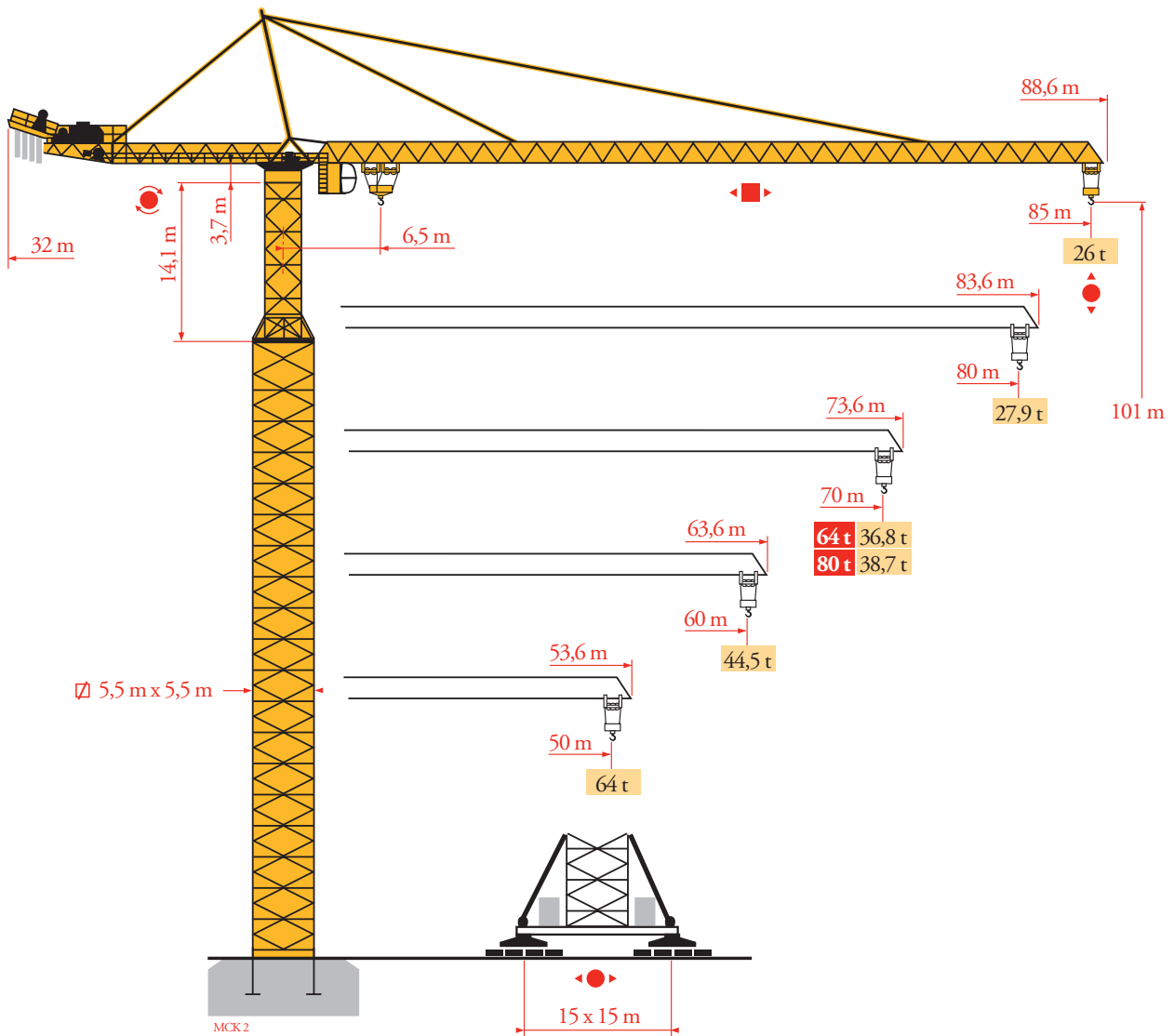


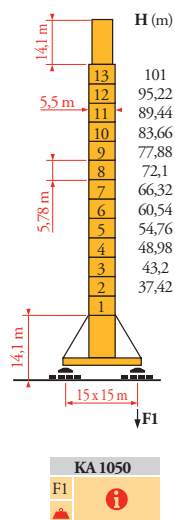
# Potain MD 3200



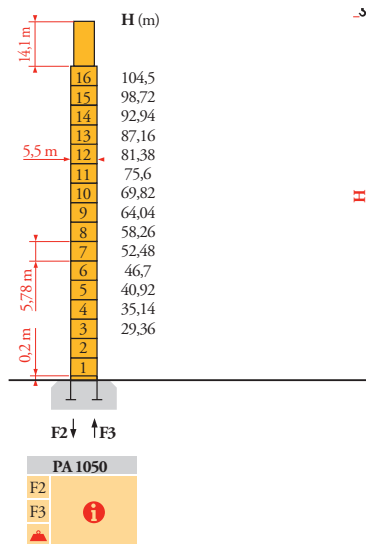
Mat / Réactions  
 Maste / Eckdrücke  
 Masts / Reactions  
 Mástil / Reacciones  
 Torre / Reazioni  
 Tramo / Reacções  
 Композиции башни /  
 Реакции

MCK3

5,5 m x 5,5 m



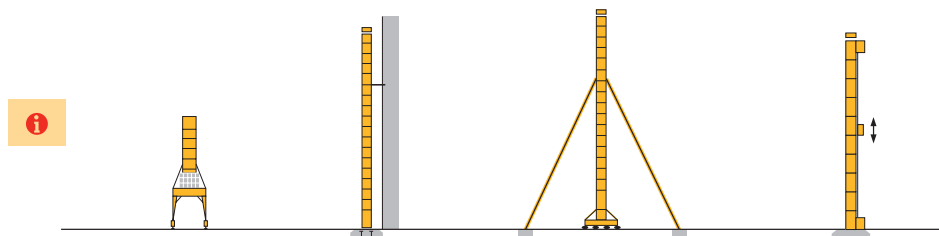
KA 1050  
 F1



PA 1050  
 F2  
 F3

Autres implantations  
 Aufstellmöglichkeiten  
 Mounting possibilities  
 Outras implantaciones  
 Altre postazioni  
 Outras implantações  
 Возможности установки

MCK3



FR

- Réactions en service
- Réactions hors service
- A vide sans lest (ni train de transport) avec flèche et hauteur maximum
- Nous consulter

DE

- Reaktionskräfte in Betrieb
- Reaktionskräfte außer Betrieb
- Ohne Last, Ballast (und Transportachse), mit Maximalausleger und Maximalhöhe
- Auf Anfrage

EN

- Reactions in service
- Reactions out of service
- Without load, ballast (or transport axles), with maximum jib and maximum height
- Consult us

ES

- Reacciones en servicio
- Reacciones fuera de servicio
- Sin carga, sin lastre, (ni tren de transporte), flecha y altura máxima
- Consultarnos

IT

- Reazioni in servizio
- Reazioni fuori servizio
- A vuoto, senza zavorra (ne assali di trasporto) con braccio massimo e altezza massima
- Consultateci

PT

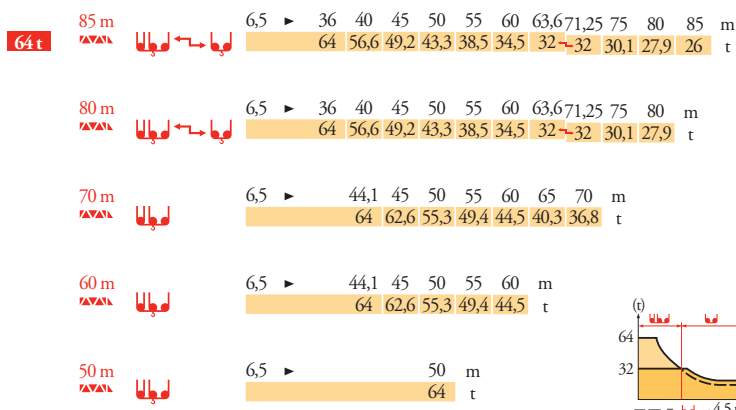
- Reacções em serviço
- Reacções fora de serviço
- Sem carga (nem trem de transporte)- sem lastro com lança e altura máximas
- Consultar-nos

RU

- Реакции при работе
- Реакции в покое
- Вес без груза, балласта (или транспортных осей), с максимальной длиной стрелы и максимальной высотой
- Проконсультируйтесь у нас

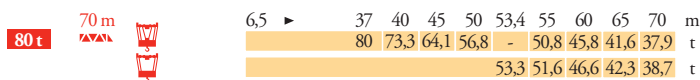
Courbes de charges  
Lastkurven  
Load diagrams  
Curvas de cargas  
Curve di carico  
Curva de cargas  
Диаграммы  
грузоподъемностей

МКК<sub>3</sub>



Mécanismes  
Antriebe  
Mechanisms  
Mecanismos  
Meccanismi  
Mecanismos  
Механизмы

МКК<sub>4</sub>



64 t											ch - PS	kW						
500 LCC 160	m/min	60	→	82	→	120	30	→	41	→	60	500	370	610 m				
	t	32		21		5,4	64		42		10,8							
800 LCC 160	m/min	92	→	126	→	160	46	→	63	→	80	785	560	610 m				
	t	32		21		5,4	64		42		10,8							
25 DVF 33	m/min	0 → 25 (64 t) - 0 → 50 (32 t)										25	18,5					
RVF	t/min U/min rpm	0 → 0,6										6x 25	6 x 18					
80 t											ch - PS	kW						
250 LCC 133	m/min	15	→	18	→	22,5	→	30	10	→	12	→	15	→	20	250	180	610 m
	t	53,3		39,8		26,5		13,3	80		60		40		20			
25 DVF 33	m/min	0 → 50										25	18,5					
RVF	t/min U/min rpm	0 → 0,6										6x 15	6 x 11					
100 t - 120 t - 160 t																		
KA 1050	RTVF	m/min	0 → 17										16 x 7	16 x 5,2				
CEI 38 IEC 38			kVA															
400 V (+6% -10%) 50 Hz			250 LCC : 315 kVA 500 LCC : 515 kVA 800 LCC : 800 kVA															

**FR**  
Levage  
Distribution  
Orientation  
Translation

**DE**  
Heben  
Katzfahren  
Schwenken  
Kranfahren

**EN**  
Hoisting  
Trolleying  
Slewing  
Travelling

**ES**  
Elevación  
Distribución  
Orientación  
Traslación

**IT**  
Sollevamento  
Distribuzione  
Rotazione  
Traslazione

**PT**  
Elevação  
Distribuição  
Rotação  
Translação

**RU**  
Подъем  
Перемещение каретки  
Поворот  
Перемещение крана



\* Document commercial non contractuel. Pour toute information technique se référer à la notice correspondante.

\* Unverbindliches Vertriebsdokument. Für technische Informationen, siehe die entsprechenden Anweisungen.

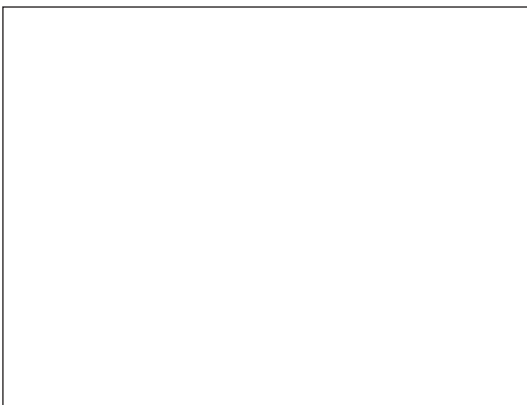
\* This commercial document is not legally binding. For any technical information, please refer to the corresponding instructions.

\* Documento commercial no contractual. Para cualquier información técnica, ver la noticia correspondiente.

\* Documento commerciale non vincolante, per tutte le informazioni tecniche fare riferimento al catalogo istruzioni.

\* Documento comercial não contratual. Para qualquer informação técnica complementar consultar as respectivas instruções.

\* Этот коммерческий документ не является юридически обязательным. Для получения технической информации, см. соответствующие инструкции.



MD 3200



**Manitowoc - Americas - World Headquarters**  
2400 S. 44th Street • Manitowoc • WI 54220 USA  
Tel: +1 920 684 4410 • Fax: +1 920 652 9778

**Manitowoc - Europe, Middle East & Africa**  
Manitowoc France SAS  
18, rue de Charbonnières B.P. 173 • 69132 ECULLY Cedex • FRANCE  
Tel: +33 (0)4 72 18 20 20 • Fax: +33 (0)4 72 18 20 00

**Manitowoc - Asia Pacific**  
16F Xu Hui Yuan Building,  
1089 Zhongshan No.2 Road (S) • Shanghai 200030 China  
Tel: +86 21 6457 0066 • Fax: +86 21 6457 4955

REF. 2004 52 MCK 5