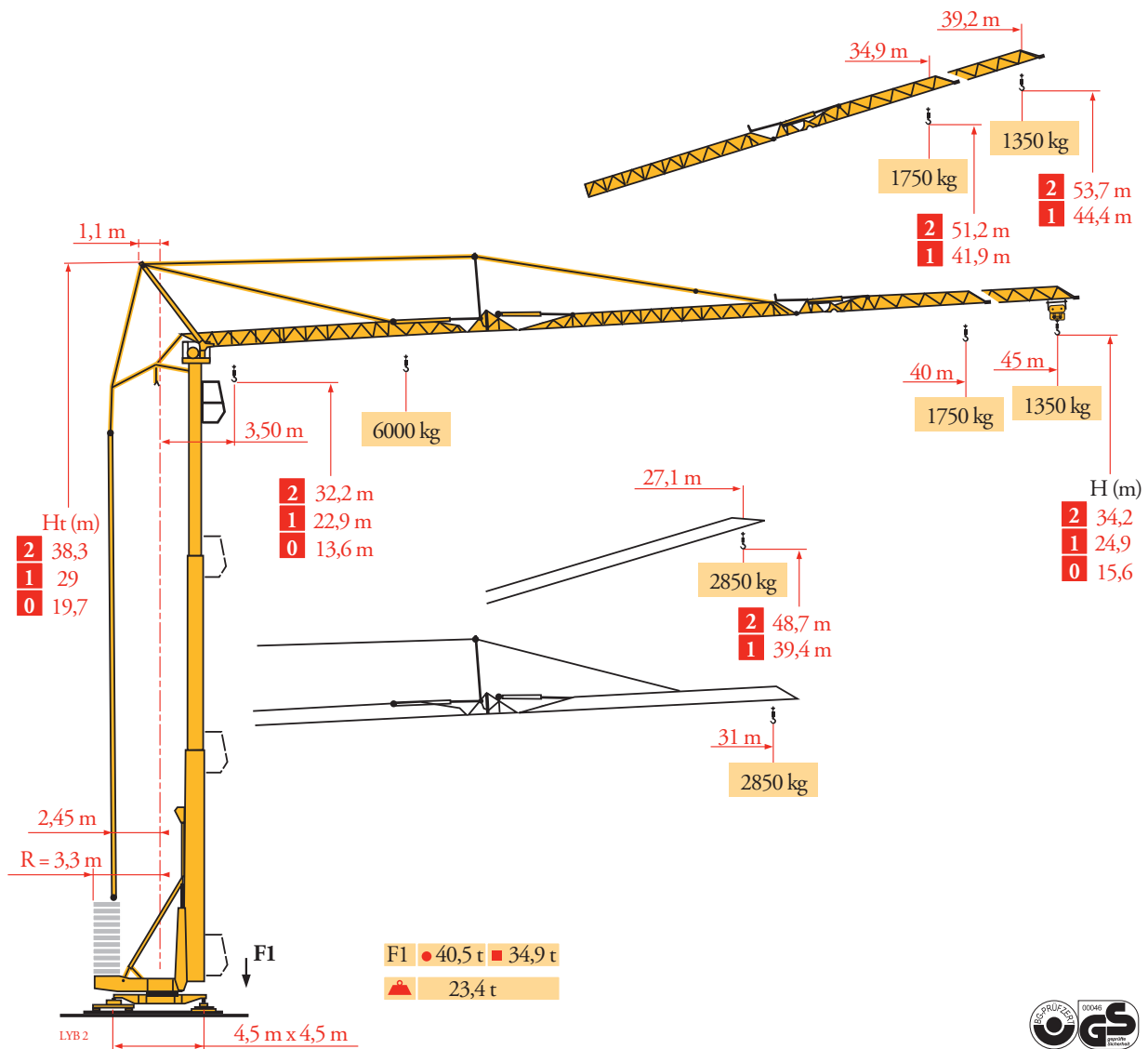
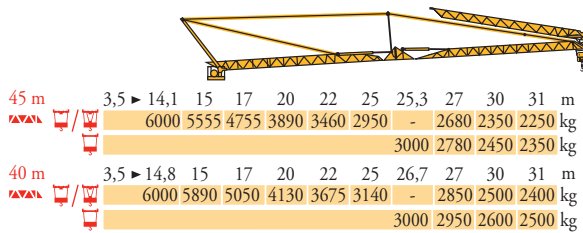
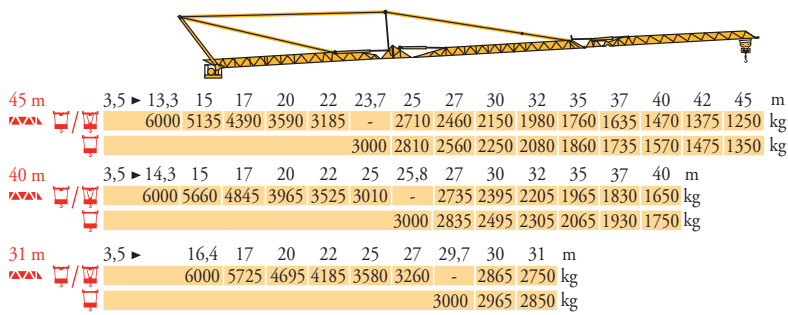


Potain HDT 80



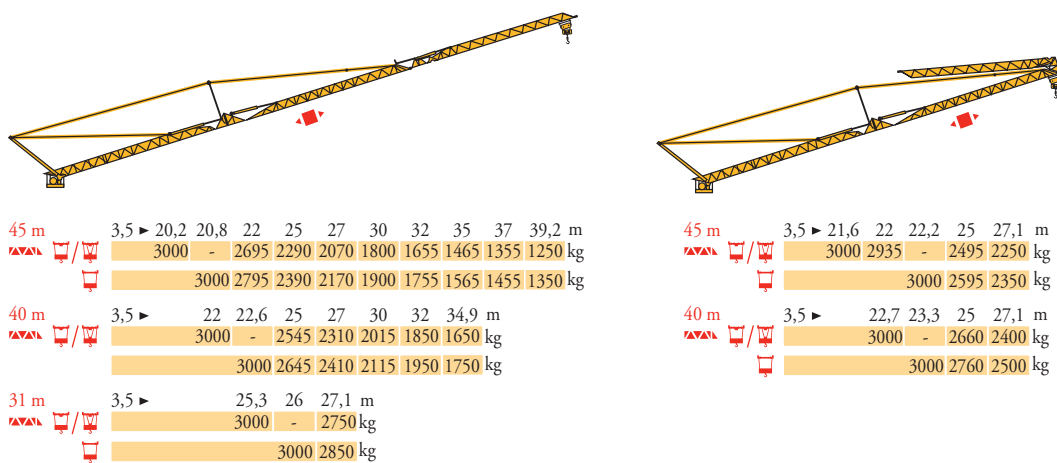
Courbes de charges
Lastkurven
Load diagrams
Curvas de cargas
Curve di carico
Curva de cargas
Диаграммы
грузоподъемностей

LYB 3



Flèche relevée
Ausleger in
Steilstellung
Luffing jib
Flecha izada
Braccio impennato
Lança inclinada
Маховая стрела









LYB 3



- | | | | | | | |
|--|---|---|---|--|---|--|
| <p>FR</p> <p>▲ Chariot distributeur
● Réactions en service
■ Réactions hors service</p> <p>▲ A vide sans lest (ni train de transport) avec flèche et hauteur maximum.</p> | <p>DE</p> <p>▲ Verfahrbare Laufkatze
● Reaktionskräfte in Betrieb
■ Reaktionskräfte außer Betrieb</p> <p>▲ Ohne Last, Ballast (und Transportachse), mit Maximalausleger und Maximalhöhe.</p> | <p>EN</p> <p>▲ Traversing trolley
● Reactions in service
■ Reactions out of service</p> <p>▲ Without load, ballast (or tren de transporte), with maximum jib and maximum height.</p> | <p>ES</p> <p>▲ Carro distribuidor
● Reacciones en servicio
■ Reacciones fuera de servicio</p> <p>▲ Sin carga, sin lastre, (ni tren de transporte), flecha y altura máxima.</p> | <p>IT</p> <p>▲ Carrellino distributore
● Reazioni in servizio
■ Reazioni fuori servizio</p> <p>▲ A vuoto, senza zavorra (ne assali di trasporto) con braccio massimo e altezza massima.</p> | <p>PT</p> <p>▲ Carro distribuidor
● Reações em serviço
■ Reações fora de serviço</p> <p>▲ Sem carga (nem trem de transporte)- sem lastro com lança e altura máximas.</p> | <p>RU</p> <p>▲ Грузовая тележка
● Реакции при работе
■ Реакции в покое</p> <p>▲ Вес без груза, балласта (или транспортных осей), с максимальной длиной стрелы и максимальной высотой.</p> |
|--|---|---|---|--|---|--|

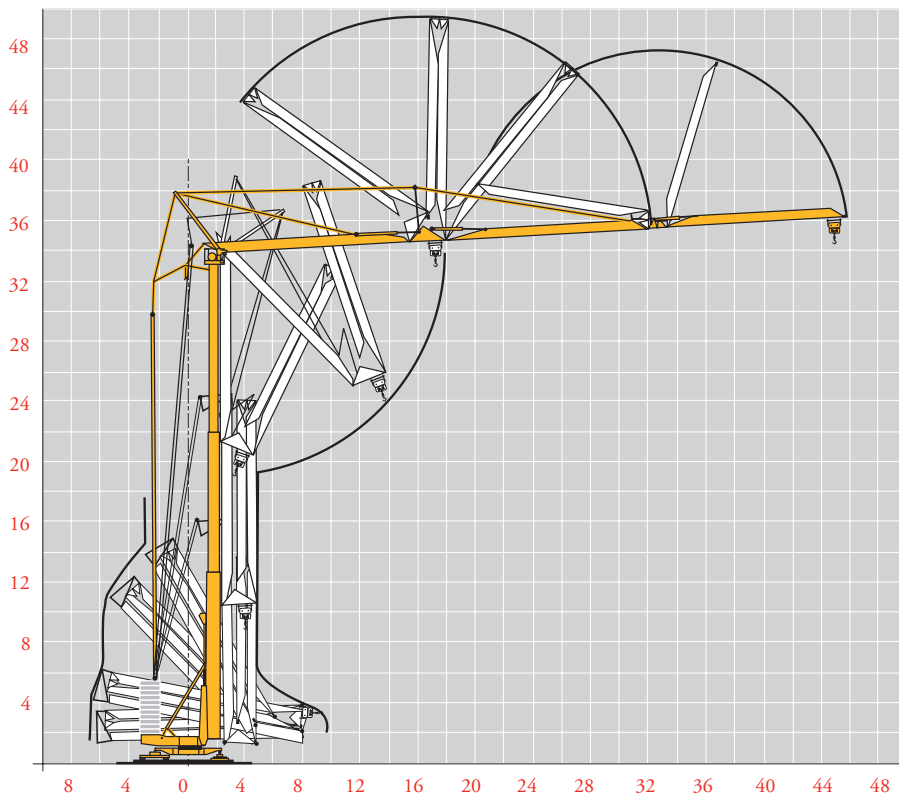
Mécanismes
Antriebe
Mechanisms
Mecanismos
Meccanismi
Mecanismos
Механизмы

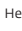


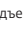
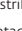






LYB 7

												ch - PS hp	kW		
	20 LVF 15	m/min	4	26	42	52	68	2	13	21	26	34	20	15	
		kg	3000	3000	1800	1400	700	6000	6000	3600	2800	1400			
	5 DVF 5	m/min	9 - 22 - 58 (3000 kg)					9 - 22 - 44 (6000 kg)					6,5	4,8	
	RVF+61	tr/min U/min rpm	0 → 0,8										8	5,9	
	TVDS 124	m/min	25										2 x 4	2 x 3	
		CEI 38			IEC 38										
		400V (+6% -10%) 50 Hz					20 LVF 15 : 35 kVA								

Montage
Montage
Erection
Montaje
Montaggio
Montagem
Монтаж

LYB 3

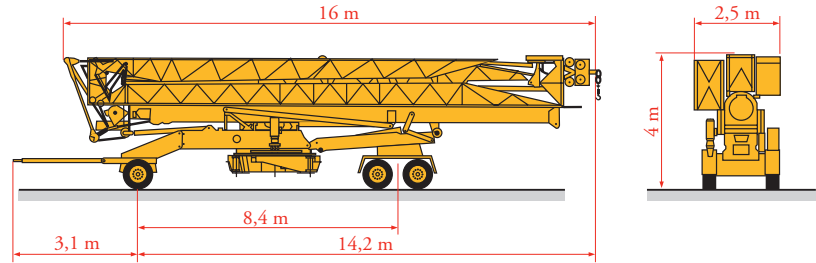


FR	DE	EN	ES	IT	PT	RU
 Leverage	 Heben	 Hoisting	 Elevación	 Sollevamento	 Elevação	 Подъем
 Distribution	 Katzfahren	 Trolleying	 Distribución	 Ditrubuzione	 Distribuição	 Перемещение каретки
 Orientation	 Schwenken	 Slewing	 Orientación	 Rotazione	 Rotação	 Поворот
 Translation	 Kranfahren	 Travelling	 Traslación	 Traslazione	 Translação	 Перемещение крана

Transport
 Transport
 Transport
 Transporte
 Trasporto
 Transporte
 Транспортировка

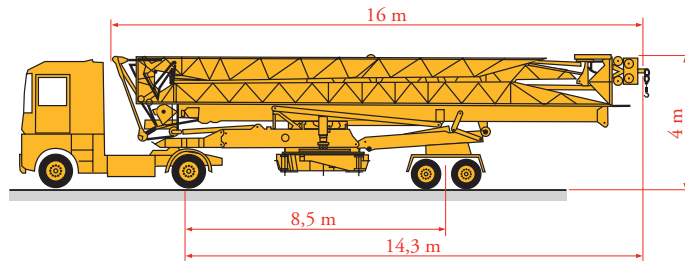
LYB 3

DJ126M/S215M



SL121/S215M

SL122/J215M



FR

Chantier

DE

Baustelle

EN

Site

ES

Obra

IT

Cantiere

PT

Estaleiro

RU

По строительной площадке



Document commercial non contractuel. Pour toute information technique se référer à la notice correspondante.

Unverbindliches Vertriebsdokument. Für technische Informationen, siehe die entsprechenden Anweisungen.

This commercial document is not legally binding. For any technical information, please refer to the corresponding instructions.

Documento commercial no contractual. Para cualquier información técnica, ver la noticia correspondiente.

Documento commerciale non vincolante, per tutte le informazioni tecniche fare riferimento al catalogo istruzioni.

Documento comercial não contratual. Para qualquer informação técnica complementar consultar as respectivas instruções.

Этот коммерческий документ не является юридически обязательным. Для получения технической информации, см. соответствующие инструкции.

Manitowoc - Americas - World Headquarters

2400 S. 44th Street • Manitowoc • WI 54220 USA
 Tel: +1 920 684 4410 • Fax: +1 920 652 9778

Manitowoc - Europe, Middle East & Africa

Manitowoc France SAS
 18, rue de Charbonnières B.P. 173 • 69132 ECULLY Cedex • FRANCE
 Tel: +33 (0)4 72 18 20 20 • Fax: +33 (0)4 72 18 20 00

Manitowoc - Asia Pacific

16F Xu Hui Yuan Building,
 1089 Zhongshan No.2 Road (S) • Shanghai 200030 China
 Tel: +86 21 6457 0066 • Fax: +86 21 6457 4955

REF. 2003 48 LYB 8